

Open letter to Consortium News Editors and Readers,

I'm sure everyone remembers the 'truther' explosion that flared up after the 9/11/01 attacks. While that distracting noise was happening, very few people noticed that the visual record of events of the Twin Towers collapses flatly contradicted key claims made within the National Institute for Standards and Technology (NIST) reports on the Twin Towers collapses. Truther noise was apparently a highly effective distraction since even 20 years after the collapses fact-based critique of the NIST reports is absent from the news, most notably from alternative news sources like Consortium News.

This creates a problem for investigative journalism, especially of an alternative variety. In the circus of 'truther-debunker' chatter the Twin Towers themselves were practically forgotten, and not only by 'truthers'. Any semblance of a detailed critique or review based on observation, measurement and basic fact-checking was utterly destroyed in the distracting noise. Repulsion from 'truthers' somehow turned people into uncritical admirers of the NIST.

In retrospect this is pretty embarrassing because even an ordinary, non-technical person can recognize some rather extreme mistakes and omissions within the NIST reports on the Twin Towers if shown what to look for. These mistakes and omissions were allowed to stand for 15 years, not only unchallenged but defended by Consortium News. I'll give some examples.

Let us start simple with a claim by the NIST that anyone who can watch a video can verify or refute. The NIST claimed multiple times that the top portion of WTC1 tilted as a unit 8 degrees before falling. The actual tilt was less than 1 degree. This claim is incorrect by more than 800%. A mistake of this magnitude, because it is so huge, is visible for anyone to see just by watching a video of WTC1 from the west side.

You do not need to be an engineer to spot this contradiction. You don't even need to be an adult. You just have to know where to look. Yet it stands in the written record 20 years after the collapses. It is also not some minor mistake because the entire collapse initiation model for WTC1 (North Tower) is based on a perimeter-led collapse as anyone can verify for themselves.

This means any teenager who can read NIST descriptions of WTC1 tilting and can watch video has the ability to refute the NIST report on the WTC1 collapse. They just have to know where to look. And this will remain true in the future since the mistake won't be going away. Yet all corporate or alternative news sources couldn't spot the mistake. They still can't. Why?

Here's another way that any ordinary teenager can refute the WTC1 NIST report if shown what to look for. Watch a video of WTC1 from the west and compare it to the tilt motion of WTC2. Can you spot the massive difference in tilt angle? Of course since it is so obvious. But the NIST claimed repeatedly within their reports on the Twin Towers that WTC1 and 2 upper portions tilted to about the same angle before falling. In fact, that is their official and only explanation for the tilt angle of both upper portions (which includes using the same perimeter-led collapse initiation model for both towers.) Anyone who can watch some videos can see this is not true. In this case the difference in tilts is well in excess of 800%. An ordinary, non-technical person can easily spot such a massive difference.

Next I'll give an even larger example of a quite popular gross misrepresentation; the way the Twin Towers collapsed; the 'collapse progression modes'.

What I am about to say is easy to verify. Any interested reader can take a pencil and paper and etch out a drawing of the actual collapse progression modes of the Twin Towers according to how they understand it. These were not generic buildings. They were of a highly specific architecture and they underwent a highly specific mode of collapse progression which is unique to these structures. Can you make a rough etching of this highly specific, unique collapse progression mode? Do you know anybody who can?

Few people seem to notice that the actual collapse progression modes (which are highly distinct and unique) are not correctly described in any U.S. Government literature, including the NIST reports. They are not correctly described in congressional records. They are also not described in any explicit way in any known professional journals. In fact, the Journal of Engineering Mechanics (JEM) published a series of papers from 2007 on that describe the collapse progressions of WTC1 and WTC2 literally as crushing blocks, the upper portion surviving the descent intact until being crushed from the bottom up. (I am not exaggerating.) A collection of graphics of the Twin Tower collapses that have appeared in professional/academic journals from 2001 to the present are [linked here](#). The pattern is pretty clear.

It is certain that at this moment the Wikipedia entry on the collapses will also contain the same absurd descriptions of the collapse progression mode it had for more than a 16 years, which is a complete misrepresentation of the actual Twin Towers progression modes. A record of Wikipedia explanations of the Twin Towers collapse modes from 2004 to 2021 are available [here](#). The different phases Wikipedia passed through when describing the Twin Towers collapse modes are examined [here](#). Any reader can check for themselves. Does your pencil etching match how the Twin Towers collapse progressions are described on Wikipedia? (Most probably not. Why?)

Next, we can gather all NIST descriptions of the collapse progression modes in one place and compare their collective description to your drawing. If you do this you will know the NIST gives no description of the collapse progressions at all. The NIST only uses 3 word sentences to describe the Twin Tower collapse progression modes like: "Global collapse ensued."

This means your pencil etching, no matter how crude, already contains more information on specifics of the Twin Towers collapse progression modes than all the WTC NIST reports combined. Also note your pencil etching is probably better than the Wikipedia entry on Twin Towers collapse progression modes.

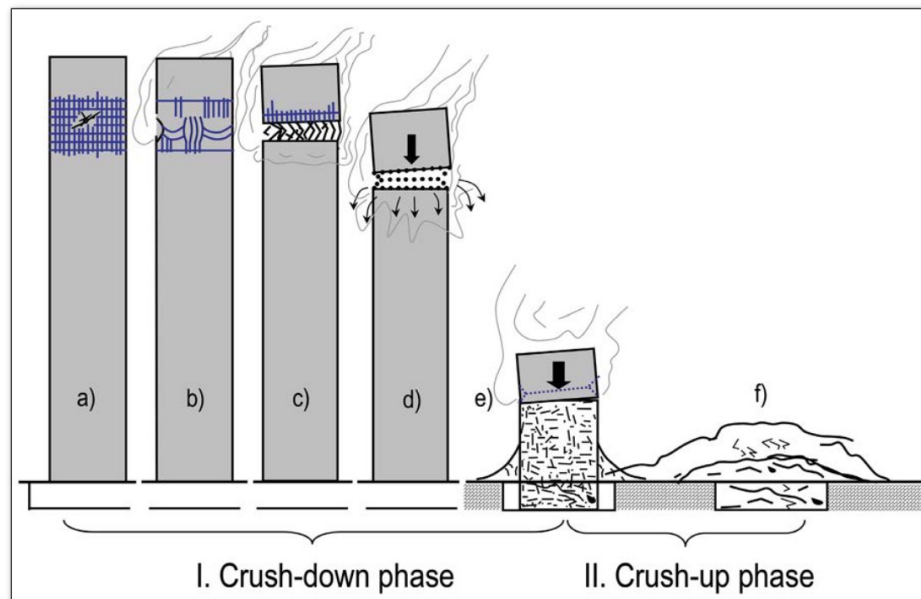
For those more inquisitive we can go further and extract all known diagrams and quotes appearing in any professional/academic journal from 2001 onward of the Twin Towers collapse progression modes and compare them with your drawing. I collected a representative sample [here](#). If you do these things you can verify for yourself that professional journals contain practically no information describing any specific Twin Tower collapse progression mode. But they do contain quite a list of popular misrepresentations of the Twin Towers collapse progression modes as shown below.

I had a dialog with one of the coauthors of one of these papers in the Journal of Engineering Mechanics (JEM) in which he repeatedly insisted that the "crush down, then crush up" model represents the actual behavior of WTC1 and WTC2. He was quite insistent and impatient with those who failed to grasp how his differential equations proved it all. (The discussion from 2009 is available online. Many of

his quotes are near the bottom of [this page](#) and demonstrate he knew nothing about any specific features of the collapse progression modes.) This published author with a PhD in mathematics sincerely believed in what he was saying.

The graphic below is from a 2017 article in Europhysics News by Dr Bazant, the central author in the JEM articles from 2006 to 2012.

► FIG. 1: Schematic of different stages of the collapse process.



20 EPN 48/1

The diagram shows how the Twin Towers collapse modes were described in professional/academic journals from 2007 to the present. Even though misrepresentations of the collapse modes of the Twin Towers have appeared from 2007 onward, no Consortium News reader or author appears aware of this.

For the few who can etch something out, have you noticed that there isn't anything as remotely sophisticated as your pencil etching in any U.S. Government literature or in any engineering journal? In fact, your pencil etchings will flatly contradict representations of the WTC1 and 2 collapses published (and peer reviewed) in the Journal of Engineering Mechanics. Do you realize that?

These examples are given in such a way that any reader can verify anything I said on their own. If I am incorrect it should be very, very easy for the reader to show how. And the mistakes and omissions are so obvious you really can't miss them if you know where to look.

SPECIFIC, DETAILED AND UNIQUE TWIN TOWERS COLLAPSE PROGRESSION MODES

Around 2009 I was part of a discussion in which participants were able to create intricate mappings of the collapse progression processes of the Twin Towers. These mappings taken collectively helped remove pretty much all doubt about what the actual progression modes were. The independent mappings of the 3 main building components, perimeter movement, core movement and movement of flooring, revealed a highly distinct, unique collapse progression mode which corresponds to the unique structural design of the Twin Towers. The mappings are [linked here](#) and have been online for about a decade

The collective mappings demonstrate beyond doubt that claims of 'truthers' groups like the *Scholars for 9/11 Truth and Justice* and *Architects and Engineers for 9/11 Truth* are incorrect, largely based on a misunderstanding of the true collapse progression modes of the Twin Towers.

But the clarity in these mappings also allowed us to see how Government reports, professional engineering journals and media in general also grossly misrepresent the collapse progression (and initiation) modes to the general public. They allowed us to see that the Twin Towers collapse modes are misrepresented by many sources, not just by certain 'truthers'.

These were huge buildings. They had a unique architecture. Everyone saw them collapse. The collapse progression modes are by far the single largest determinant of what we saw when we all watched the Twin Towers collapse. So if an observer doesn't know what it is or doesn't understand the unique and distinct collapse progression mode, it is not possible they can understand what they are looking at images and videos of the collapses. These questions do stand out for anyone trying to etch, visualize, or understand the collapse modes of these buildings:

How is the distinct and unique architecture of the Twin Towers related to the unique modes by which they collapsed?

If a unique collapse progression mode occurred in the Twin Towers based on a unique architecture, why can't anyone reading this tell me what it is or make a pencil drawing of it?

Why are accurate, detailed descriptions of this unique Twin Towers collapse progression mode missing from all U.S. Government and professional literature? How did such a large omission go unnoticed all this time? (Especially by alternative media)

Why are the WTC collapse progression modes so poorly represented to the public and so misunderstood in both mass media, Wikipedia, and in online news resources, including Counterpunch (see example below)?

These questions are about big things you can easily verify for yourself without any sophisticated measuring tools at all.

THE CONSORTIUM NEWS CONTRIBUTION TO TWIN TOWERS AND NIST MISREPRESENTATIONS

If a person searches the Consortium News archive for “NIST”, “Twin Towers”, “World Trade Center collapse”, “truther”, “conspiracy theory”, the following articles appear (put in chronological order):

<https://www.consortiumnews.com/2001/092501a.html>

<https://www.consortiumnews.com/2002/052002a.html>

<https://consortiumnews.com/2004/032904.html>

<http://www.consortiumnews.com/2009/091109.html>

<http://www.consortiumnews.com/2010/010710a.html>

<http://www.consortiumnews.com/2010/091510.html>

<https://www.consortiumnews.com/2011/011211.html>

<http://www.consortiumnews.com/2011/011511.html>

<https://consortiumnews.com/2011/09/05/911-incompetence-and-dishonesty/>

<https://consortiumnews.com/2011/09/11/chronicling-americas-911-descent/>

<https://consortiumnews.com/2012/09/11/the-neocons-and-911/>

<https://consortiumnews.com/2013/11/19/where-new-jfk-evidence-points/>

<https://consortiumnews.com/2013/11/21/jfk-the-anti-conspiracy-conspiracy/>

<https://consortiumnews.com/2013/12/02/contra-cocaine-was-a-real-conspiracy/>

<https://consortiumnews.com/2014/12/16/torture-impunity-and-police-shootings/>

<https://consortiumnews.com/2015/02/13/the-putin-did-it-conspiracy-theory/>

<https://consortiumnews.com/2015/06/16/explaining-myself/>

<https://consortiumnews.com/2015/08/31/americas-short-sighted-grand-strategy/>

<https://consortiumnews.com/2016/05/03/shying-away-from-911-evidence/>

<https://consortiumnews.com/2016/04/27/911-commission-didnt-clear-saudis/>

<https://consortiumnews.com/2016/06/15/a-campaign-based-on-conspiracy-theory/>

<https://consortiumnews.com/2016/06/22/the-long-hidden-saudi-911-connection/>

<https://consortiumnews.com/2016/08/05/letting-saudi-arabia-off-the-911-hook/>

<https://consortiumnews.com/2016/10/06/the-joint-us-saudi-guilt-for-911/>

<https://consortiumnews.com/2016/10/29/the-de-facto-usal-qaeda-alliance/>

<https://consortiumnews.com/2017/03/06/official-washington-tips-into-madness/>

<https://consortiumnews.com/2017/03/19/nyts-tinfoil-hat-conspiracy-theory/>

<https://consortiumnews.com/2017/05/23/trump-lets-saudis-off-on-911-evidence/>

<https://consortiumnews.com/2017/06/16/the-fallacies-of-the-russia-truthers/>

<https://consortiumnews.com/2018/01/28/robert-parrys-legacy-and-the-future-of-consortiumnews/>

<https://consortiumnews.com/tag/jfk-assassination/>

<https://consortiumnews.com/2019/08/13/the-epstein-case-everyones-a-conspiracy-theorist/>

<https://consortiumnews.com/2019/12/11/replace-conspiracy-theory-with-remember-iraq/>

<https://consortiumnews.com/2021/02/14/government-secrecy-causes-conspiracy-theories/>

A wide variety of articles are included. This allows one to see how this news source presented the Twin Towers collapses as a whole over many years.

The first thing of note is that Consortium News brings together a variety of viewpoints which are consistently insightful and intelligent. It is a unique website with a unique history.

That being said, there is no mention of any specific or unique Twin Towers collapse progression modes in any of the articles over a 20 year period. There is no evidence that any contributor knew anything about the Twin Towers collapse modes.

This is one of the most interesting contrasts in the Consortium News archive. Contributors have insightful, independent analysis around the implications of the Twin Towers collapses, but not one contributor seemed to know anything about the collapse modes of the Twin Towers.

Also, I couldn't find anything in the archive critical of the NIST reports on the Twin Towers. What I could find are references to 'truthers' talking points. Lots of them.

For example, Robert Parry wrote [this article](#) in 2011. From 2007 to 2017 the Twin Towers collapse modes were described literally as blocks in professional/academic publications which undergo a 'crush down phase' followed by a 'crush up phase' where the 'upper block' was crushed 'from the bottom up'. These misrepresentations were already in journals for 4 years by the time Parry wrote the article.

Parry didn't notice any of these misrepresentations of the Twin Tower collapse modes. He was focused on truther taking points. From the archives I cannot find any aspect of the Twin Towers collapses that drew his attention like truther talking points.

Another example is that the **NIST Final Report on the Collapse of the World Trade Center Towers** was released 6 years before Parry wrote. It included only 5 words in total on the Twin Towers collapse progression modes: *collapse, ensued, began, then, global*. The only phrases used were "global collapse began", "global collapse ensued" and "collapse then ensued".

The NIST claimed they did not need to include any more information on the Twin Towers collapse modes because a 2001 article in JEM by Dr Bazant demonstrated it was unnecessary. This was the only explanation given to the public in 15 years. The same Dr Bazant had been openly misrepresenting the Twin Towers collapse modes in American Society of Civil Engineers (ASCE) publications for 4 years by the time Parry wrote.

There is no evidence that any contributor to Consortium News was aware of any of this. They most probably were not. People in the world of journalism had no idea what was happening in the world of professional/academic journals on the Twin Towers collapses as they were writing. No readers were informed any of this was happening.

The political analysis in Consortium News was very astute. Knowledge of the Twin Towers collapse modes was nonexistent. This strange contrast between independent political insight and total technical dependency concerning the Twin Towers collapses is a consistent feature in the linked articles.

It appears Robert Parry found himself 'trapped' in a truther frame of reference. By 'trapped' I mean he seemed unable to formulate questions about the NIST reports independently and not influenced by 'truther' claims. Parry's entire critical focus was on 'truther' claims. He seemed to spend no time on NIST claims at all in comparison, despite being aware of I.F. Stone's reminder that 'all governments lie'.

Parry seemed so dazed chasing truther windmills, so 'punch-drunk' swinging at truthers and addressing 'truther' concerns that he'd hardly had energy left to look at the visual record, look at the NIST reports, and compare the two. It is as if he *collapsed* into the NIST world-view by default as a response to 'truthers' without sufficient resistance or suspended judgement. He seemed unable to approach NIST claims *independently* and *critically*.

For example, the NIST was off by more than 800% in their description of the North Tower tilting movement of the upper portion in 2005. A mistake that large can be seen with no visual aids. The NIST released the visual evidence they used to write their reports in 2009 under an FOIA request. Parry wrote in 2011 but didn't notice any of this. Such a massive discrepancy is visible to any teenager that knows what to look for just by using video and no visual aids. Yet independent investigative journalism allowed and still allows such massive discrepancies to go unchallenged for 16 years after the NIST reports on the Twin Towers first appeared. Why?

When examining the Consortium News archive I couldn't find any direct criticism or examination of the NIST reports at all. This seemed to be a non-issue in Consortium News. If one were interested in checking NIST claims for accuracy one would:

- 1) assemble visual record of events (not available until 2009)
- 2) Read NIST claims
- 3) Compare the two and check for consistency

This is straightforward fact-checking of a U.S. Government agency. This type of fact-checking would be consistent with what investigative journalism is about.

In this case Parry didn't have the technical skills to examine NIST claims directly. Unfortunately, Parry seemed to have little patience for those who did. He seemed to take refuge in the NIST without resistance and without understanding why others might remain more skeptical or ask to see visual evidence. It was a strange and vulnerable dependence of otherwise independent investigative journalists on a U.S. Government agency. Aren't independent alternative news sources supposed to be a bit more skeptical toward Government claims? Why would the NIST be treated differently?

Consortium News lost something in this process because, like I mentioned, an average teenager, now and in the future, won't have a problem spotting key mistakes with the NIST findings if they know where to look. Nor should a reader of this article.

Anyone can examine the Consortium News archive comprehensively. Looking through it one would never know each of the Twin Towers fell through a highly unique, clearly distinguishable, knowable progression modes that were directly related to the unique architecture of the towers. The readers were never informed. Authors appear unaware of this fact. The archive stands as proof that apparently few if any knew in any detail of the uniqueness of the Twin Towers collapse progression modes.

These are some facts that I believe Consortium News readers may want to know about the collapse modes of the Twin Towers:

- There were unique, identifiable, mappable and knowable collapse progression modes by which the Twin Towers fell. The unique mode of collapse were directly related to the unique structural design of the towers. This is indisputable. The public was never informed what that unique collapse mode was. This is also indisputable.
- The collapse modes of the Twin Towers were never mentioned in any article in Consortium News in 20 years. There is no evidence any contributor knew about them. Readers were never informed they exist.
- Almost nobody you know can etch out even a crayon drawing concerning specific collapse modes of the Twin Towers in any detail, including in Consortium News.
- The unique and highly distinct collapse modes of the Twin Towers play such a large role in the collapses of each of the Twin Towers that it is impossible for someone witnessing the collapses to understand what they are looking at without knowing what the collapse modes were.

- There is no description of the Twin Towers collapse progression modes in the NIST reports. In the **NIST Final Report on the Collapse of the World Trade Center Towers** (2005) the collapse modes of the Twin Towers are mentioned only 5 times using a total of 5 words: *collapse, ensued, began, then, global*. The only phrases used were “global collapse began”, “global collapse ensued” and “collapse then ensued”.
- The Twin Towers collapse modes are misrepresented in American Society of Civil Engineer (ASCE) professional/academic publications literally as blocks consisting of a ‘crush down phase’ followed by a ‘crush up phase’ where the ‘upper block’ survives while crushing the ‘lower block’ and is then destroyed from the ‘bottom up’.
- The Twin Towers are treated in both the NIST reports and all professional journals as generic collapses with no unique, specific features which we mortals can identify. Just falling dust blobs, as 'catastrophic energy releases' with absolutely no distinct, identifiable features unique to the original structural design of the Twin Towers. Or in engineering journals as 'blocks'.
- Pretty much every comment of the collapse progression processes of the Twin Towers collapses you will see and hear during the 20th anniversary on mass media and alternative media is based on fabricated ‘cartoon-type’ models and absurdly generic descriptions. Not a single comment will describe a ***specific and unique*** Twin Tower collapse progression mode. There will be no criticism of the NIST reports at all.
- There is a discrepancy of more than 800% in the NIST description of the WTC1 tilting process that any non-technical person that takes the time to watch a video can spot. This inconsistency went unchallenged and unnoticed by both corporate and alternative media for more than 15 years and counting.
- People who are on record for 20 years not knowing much of anything about the unique, distinct, mappable and knowable way the Twin Towers collapsed are not the best candidates to teach ‘truthers’ about how the Twin Towers collapsed.
- The root cause of misrepresentations of the Twin Towers collapse modes is a decision by the NIST in 2002 to refuse to offer the public any information on the collapse modes of the Twin Towers from 2002 to 2021. Silence on the subject of Twin Towers collapse modes in their 2005 final report led directly to Dr Steven Jones misrepresenting the Twin Towers collapse modes in 2006 and Dr Bazant misrepresenting the collapse modes from 2007 to 2021. They couldn’t have succeeded without the NIST’s silence.
- All 3 of the most sophisticated misrepresentations of the Twin Towers collapse modes are by sources with PhDs in the physical sciences. They were introduced to the public in 2005, 2006 and 2007. Only one of the three claims to be a ‘truther’. One is a U.S. Government agency.

This is not a comprehensive list. These are just some of the things Consortium News readers may want to know about the Twin Towers collapse modes and written records that they cannot find in any alternative news source (and probably never will).

Consortium News will most probably continue to unwittingly misrepresent both the Twin Towers collapses and the NIST reports on the towers for a long time to come to their readers. I'll probably continue reading Consortium News because it is a very good news source with many informative articles. The archive is very good. But on this issue Consortium News has obviously been very weak and uninformed. On this subject this news source became an odd hybrid of independent and highly insightful political analysis combined with technical illiteracy of the Twin Towers collapses and complete dependency on U.S. Government sources for technical information.

The articles will probably remain in the archive without any further comments or corrections. They will probably be the last statements Consortium News issues on the Twin Towers collapse modes. These contradictions won't go away by themselves.

In peace,

Thomas Kost

I can be contacted at tkost999@gmail.com