

Open letter to Counterpunch Magazine Editors and Readers,

I'm sure everyone remembers the 'truther' explosion that flared up after the 9/11/01 attacks. While that distracting noise was happening, very few people noticed that the visual record of events of the Twin Towers collapses flatly contradicted key claims made within the NIST reports on the Twin Towers collapses. Truther noise was apparently a highly effective distraction since even 20 years after the collapses fact-based critique of the National Institute for Standards and Technology (NIST) reports is absent from the news, most notably from alternative news sources like Counterpunch.

This creates a problem for investigative journalism, especially of an alternative variety. In the circus of 'truther-debunker' chatter the Twin Towers themselves were practically forgotten, and not only by 'truthers'. Any semblance of a detailed critique or review based on observation, measurement and basic fact-checking was utterly destroyed in the distracting noise. Repulsion from 'truthers' somehow turned people into uncritical admirers of the NIST.

In retrospect this is pretty embarrassing because even an ordinary, non-technical person can recognize some rather extreme mistakes and omissions within the NIST reports on the Twin Towers if shown what to look for. These mistakes and omissions were allowed to stand for 15 years, not only unchallenged but defended by Counterpunch. I'll give some examples.

Let us start simple with a claim by the NIST that anyone who can watch a video can verify or refute. The NIST claimed multiple times that the top portion of WTC1 tilted as a unit 8 degrees before falling. The actual tilt was less than 1 degree. This claim is incorrect by more than 800%. A mistake of this magnitude, because it is so huge, is visible for anyone to see just by watching a video of WTC1 from the west side.

You do not need to be an engineer to spot this contradiction. You don't even need to be an adult. You just have to know where to look. Yet it stands in the written record 20 years after the collapses. It is also not some minor mistake because the entire collapse initiation model for WTC1 is based on a perimeter-led collapse as anyone can verify for themselves.

This means any teenager who can read NIST descriptions of WTC1 tilting and can watch video has the ability to refute the NIST report on the WTC1 collapse. They just have to know where to look. And this will remain true in the future since the mistake won't be going away. Yet all corporate or alternative news sources couldn't spot the mistake. They still can't. Why?

Here's another way that any ordinary teenager can refute the WTC1 NIST report if shown what to look for. Watch a video of WTC1 from the west and compare it to the tilt motion of WTC2. Can you spot the massive difference in tilt angle? Of course since it is so obvious. But the NIST claimed repeatedly within their reports on the Twin Towers that WTC1 and 2 upper portions tilted to about the same angle before falling. In fact, that is their official and only explanation for the tilt angle of both upper portions (which includes using the same perimeter-led collapse initiation model for both towers.) Anyone who can watch some videos can see this is not true. In this case the difference in tilts is well in excess of 800%. An ordinary non-technical person can easily spot such a massive difference.

Next I'll give an even larger example of a quite popular gross misrepresentation; the way the Twin Towers collapsed; the 'collapse progression modes'.

What I am about to say is easy to verify. Any interested reader can take a pencil and paper and etch out a drawing of the actual collapse progression modes of the Twin Towers according to how they understand it. These were not generic buildings. They were of a highly specific architecture and they underwent a highly specific mode of collapse progression which is unique to these structures. Can you make a rough etching of this highly specific, unique collapse progression mode? Do you know anybody who can?

Few people seem to notice that the actual collapse progression modes (which are highly distinct and unique) are not correctly described in any U.S. Government literature, including the NIST reports. They are not correctly described in congressional records. They are also not described in any explicit way in any known professional journals. In fact, the Journal of Engineering Mechanics (JEM) published a series of papers from 2007 on that describe the collapse progressions of WTC1 and WTC2 literally as crushing blocks, the upper portion surviving the descent intact until being crushed from the bottom up. (I am not exaggerating.) A collection of graphics of the Twin Tower collapses that have appeared in professional/academic journals from 2001 to the present are [linked here](#). The pattern is pretty clear.

It is certain that at this moment the Wikipedia entry on the collapses will also contain one of the same absurd descriptions of the collapse progression mode it had for more than a 16 years, which is a complete misrepresentation of the actual Twin Towers progression modes. A record of Wikipedia explanations of the Twin Towers collapse modes from 2004 to 2021 are available [here](#). The different phases Wikipedia passed through when describing the Twin Towers collapse modes are examined [here](#). Any reader can check for themselves. Does your pencil etching match how the Twin Towers collapse progressions are described on Wikipedia? (Most probably not. Why?)

Next, we can gather all NIST descriptions of the collapse progression modes in one place and compare their collective description to your drawing. If you do this you will know the NIST gives no description of the collapse progressions at all. The NIST only uses 3 word sentences to describe the Twin Tower collapse progression modes like: "Global collapse ensued."

This means your pencil etching, no matter how crude, already contains more information on specifics of the Twin Towers collapse progression modes than all the WTC NIST reports combined. Also note your pencil etching is probably better than the Wikipedia entry on Twin Towers collapse progression modes.

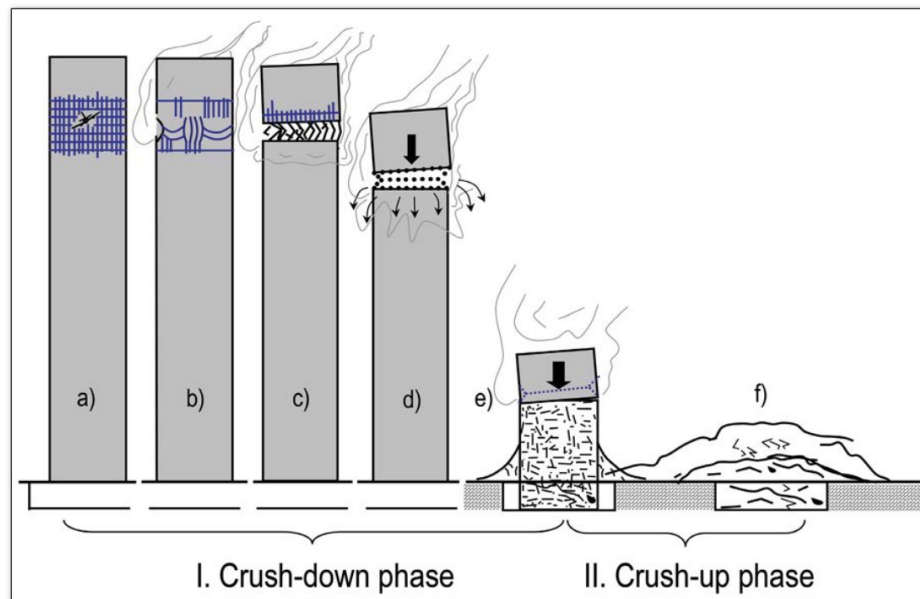
For those more inquisitive we can go further and extract all known diagrams and quotes appearing in any professional/academic journal from 2001 onward of the Twin Towers collapse progression modes and compare them with your drawing. I collected a representative sample [here](#). If you do these things you can verify for yourself that professional journals contain practically no information describing any specific Twin Tower collapse progression mode. But they do contain quite a list of popular misrepresentations of the Twin Towers collapse progression modes.

I had a dialog with one of the coauthors of one of these papers in the Journal of Engineering Mechanics (JEM) in which he repeatedly insisted that the "crush down, then crush up" model represents the actual behavior of WTC1 and WTC2. He was quite insistent and impatient with those who failed to grasp how his differential equations proved it all. (The discussion from 2009 is available online. Many of

his quotes are near the bottom of [this page](#) and demonstrate he knew nothing about any specific features of the collapse progression modes.) This published author with a PhD in mathematics sincerely believed in what he was saying.

The graphic below is from a 2017 article in Europhysics News by Dr Bazant, the central author in the JEM articles from 2006 to 2012.

► FIG. 1: Schematic of different stages of the collapse process.



20 EPN 48/1

The diagram shows how the Twin Towers collapse modes were described in professional/academic journals from 2007 to the present. Even though misrepresentations of the collapse modes of the Twin Towers have appeared from 2007 onward, no Counterpunch Magazine reader or author appears aware of this because the matter was considered ‘settled’ in 2006 and not mentioned or updated since.

For the few who can etch something out, have you noticed that there isn't anything as remotely sophisticated as your pencil etching in any U.S. Government literature or in any engineering journal? In fact, your pencil etchings will flatly contradict representations of the WTC1 and 2 collapses published (and peer reviewed) in the Journal of Engineering Mechanics. Do you realize that?

These examples are given in such a way that any reader can verify anything I said on their own. If I am incorrect it should be very, very easy for the reader to show how. And the mistakes and omissions are so obvious you really can't miss them if you know where to look.

## SPECIFIC, DETAILED AND UNIQUE TWIN TOWERS COLLAPSE PROGRESSION MODES

Around 2009 I was part of a discussion in which participants were able to create intricate mappings of the collapse progression processes of the Twin Towers. These mappings taken collectively helped remove pretty much all doubt about what the actual progression modes were. The independent mappings of the 3 main building components, perimeter movement, core movement and movement of flooring, revealed a highly distinct, unique collapse progression mode which corresponds to the unique structural design of the Twin Towers. The mappings are [linked here](#) and have been online for about a decade

The collective mappings demonstrate beyond doubt that claims of 'truthers' groups like the *Scholars for 9/11 Truth and Justice* and *Architects and Engineers for 9/11 Truth* are incorrect, largely based on a misunderstanding of the true collapse progression modes of the Twin Towers.

But the clarity in these mappings also allowed us to see how Government reports, professional engineering journals and media in general also grossly misrepresent the collapse progression (and initiation) modes to the general public. They allowed us to see that the Twin Towers collapse modes are misrepresented by many sources, not just by certain 'truthers'.

These were huge buildings. They had a unique architecture. Everyone saw them collapse. The collapse progression modes are by far the single largest determinant of what we saw when we all watched the Twin Towers collapse. So if an observer doesn't know what it is or doesn't understand the unique and distinct collapse progression mode, it is not possible they can understand what they are looking at images and videos of the collapses. These questions do stand out for anyone trying to etch, visualize, or understand the collapse modes of these buildings:

How is the distinct and unique architecture of the Twin Towers related to the unique modes by which they collapsed?

If a unique collapse progression mode occurred in the Twin Towers based on a unique architecture, why can't anyone reading this tell me what it is or make a pencil drawing of it?

Why are accurate, detailed descriptions of this unique Twin Towers collapse progression mode missing from all U.S. Government and professional literature? How did such a large omission go unnoticed all this time? (Especially by alternative media)

Why are the WTC collapse progression modes so poorly represented to the public and so misunderstood in both mass media, Wikipedia, and in online news resources, including Counterpunch (see example below)?

These questions are about big things you can easily verify for yourself without any sophisticated measuring tools at all.

## THE COUNTERPUNCH CONTRIBUTION TO TWIN TOWERS AND NIST MISREPRESENTATIONS

If a person searches Counterpunch archives for “NIST”, “Twin Towers”, or “World Trade Center” the following articles appear (put in chronological order):

<https://www.counterpunch.org/2001/09/11/who-saw-it-coming/>

<https://www.counterpunch.org/2001/09/12/sense-and-nonsense-about-september-11/>

<https://www.counterpunch.org/2001/09/20/faceless-enemies/>

<https://www.counterpunch.org/2001/10/25/hiroshima-to-new-york/>

<https://www.counterpunch.org/2001/10/26/the-turner-diaries-and-9-11/>

<https://www.counterpunch.org/2002/01/11/forbidden-truths/>

<https://www.counterpunch.org/2002/05/21/follow-the-money-bush-9-11-and-deep-threat/>

<https://www.counterpunch.org/2002/07/20/world-trade-center-burlesque/>

<https://www.counterpunch.org/2004/05/25/a-review-of-quot-the-new-pearl-harbor-quot/>

<https://www.counterpunch.org/2004/12/09/sander-hicks-and-the-9-11-truth-movement/>

<https://www.counterpunch.org/2005/12/19/9-11-missing-black-boxes-in-world-trade-center-attacks-found-by-firefighters-analyzed-by-ntsb-concealed-by-fbi/>

<https://www.counterpunch.org/2006/02/06/my-epiphany/>

<https://www.counterpunch.org/2006/09/09/the-9-11-conspiracy-nuts/>

<https://www.counterpunch.org/2006/09/15/in-defense-of-conspiracy/>

<https://www.counterpunch.org/2006/09/25/flying-saucers-and-the-decline-of-the-left/>

<https://www.counterpunch.org/2006/11/28/the-9-11-conspiracists-and-the-decline-of-the-anamerican-left/>

<https://www.counterpunch.org/2006/11/28/the-thermodynamics-of-9-11/>

<https://www.counterpunch.org/2006/11/28/the-physics-of-9-11/>

<https://www.counterpunch.org/2006/11/28/dark-fire/>

<https://www.counterpunch.org/2006/11/28/debunking-the-myths-of-9-11/>

<https://www.counterpunch.org/2006/11/28/how-far-we-have-fallen-2/>

<https://www.counterpunch.org/2007/03/07/what-did-israel-know-in-advance-of-the-9-11-attacks/>

<https://www.counterpunch.org/2007/08/04/a-bridge-truth-movement/>

<https://www.counterpunch.org/2007/08/27/911-emergency-calling-robert-fisk/>

<https://www.counterpunch.org/2007/09/12/forgetting-9-11/>

<https://www.counterpunch.org/2007/09/18/britain-s-9-11-truth-movement-who-s-responsible/>

<https://www.counterpunch.org/2008/08/22/the-big-heat/>

<https://www.counterpunch.org/2011/09/02/the-911-conspiracists-vindicated-after-all-these-years/>

<https://www.counterpunch.org/2012/09/11/the-11th-anniversary-of-911/>

<https://www.counterpunch.org/2017/09/11/an-architecture-of-doom-and-dread-2/>

<https://www.counterpunch.org/2012/09/11/the-11th-anniversary-of-911/>

<https://www.counterpunch.org/2018/09/11/the-ghosts-of-9-11/>

<https://www.counterpunch.org/2019/04/19/the-strange-success-of-russiagate/>

<https://www.counterpunch.org/2019/09/27/anatomy-of-a-conspiracy-theory/>

<https://www.counterpunch.org/2019/11/08/the-epstein-story-continues-to-unravel/>

<https://www.counterpunch.org/2021/03/05/conspiracy-theories/>

<https://www.counterpunch.org/2021/06/28/deadly-collapse-of-illusions-in-miami/>

<https://www.counterpunch.org/2021/09/02/lies-about-how-the-attack-on-afghanistan-started/>

<https://www.counterpunch.org/2021/09/02/confessions-of-a-secret-controlled-demolitions-special-operative-for-911/>

There is no mention of any specific or unique Twin Towers collapse progression modes in any of the articles over a 20 year period. There is no evidence that any contributor understood the collapse modes of the Twin Towers. There is no evidence that any Counterpunch reader was ever informed of the collapse modes of the Twin Towers or the written history of the collapse modes.

The Counterpunch archive is a completely different world than that of American Society of Civil Engineering (ASCE) publications. No Counterpunch reader was ever informed of what is being

written in ASCE publications on the Twin Towers collapse modes from 2006 to 2021. It is not clear that any Counterpunch contributor was aware of why the world of professional publications on the Twin Towers collapses would be relevant in their lives at all.

Likewise there is no critique of the **NIST Final Report on the Collapse of the World Trade Center Towers** in the archive. I am unable to find a single negative word on this U.S Government report in the Counterpunch Magazine archive.

Looking back, one can verify that Counterpunch acted effectively as an apologist for the NIST. Not intentionally, but in effect it was the same. What Alexander Cockburn was doing in [this article](#), for example, is understandable. He was reacting to 'trutherism'. He was frustrated by it. What he didn't realize is that his article demonstrates he lacked knowledge of the collapse modes of the Twin Towers and corresponding professional literature just like the people he criticized, and it shows if you know what to look for. He lacked knowledge of both the visual record of collapse events and government and professional literature on the collapses.

Cockburn presented a casual description of the Twin Towers collapse progression modes given by Herman Soifer, a retired structural engineer, in his article. Why didn't he quote the description of the Twin Towers collapse progression mode in actual government or professional sources instead? The article was written in 2006 and the **NIST Final Report on the Collapse of the World Trade Center Towers** was released the year before. Why didn't he just quote from the report? Or why didn't Herman Soifer look at NIST findings to see if his casual description was in agreement with official claims? All Cockburn had to do was to compare the two to see if this casual description by his friend matched official descriptions of the collapse progression mode, and he would have realized the answer was 'no'.

Consultations with Herman Soifer, a retired structural engineer, substituted for any quote from the NIST reports. Not a single government report or professional engineering journal was cited in this 2006 article since to Cockburn the collapse progression modes were 'obvious' or 'known'. Like everyone else at the time Cockburn had no access to accurate collapse records and he was guessing. This was another personal 'pencil etching', but Cockburn didn't realize that even the pencil etching he was offering his readers will directly contradict material published in the Journal of Engineering Mechanics from 2007 onward. He won't notice that happen one year later because Counterpunch stopped writing on this subject in 2006. Instead Cockburn passed the etching off as 'common knowledge' of the Twin Towers collapse progression modes and Counterpunch Magazine unwittingly acted as a defender of the NIST reports to their readers ever since.

From 2007 to 2017 the Twin Towers collapse modes were described literally as blocks which undergo a 'crush down phase' followed by a 'crush up phase' where the 'upper block' was crushed 'from the bottom up' in professional/academic publications, but Counterpunch Magazine never noticed this because the subject was never revisited after 2006, a year before the misrepresentation appeared.

Anti-truther never had to mean anti-research or anti-critique or an ignorance of the historic record. The casual description of the Twin Towers collapse progression modes within the article is the most detailed description of the collapse modes that I know of within Counterpunch Magazine. That was the closest a Counterpunch article ever came to describing the Twin Towers collapse modes in 20 years. The reason it would have been impossible for Cockburn to quote a source from NIST or from any professional engineering journal is because no such quote existed at the time or now. He failed to notice that none existed because he never checked. No Counterpunch reader was informed of this. The truth is that explanations among friends was all he had in 2006, a year after the NIST issued their final

report on the subject. He should have noticed there was no mention of the Twin Towers collapse modes in the NIST reports on the Twin Towers but was apparently content with no NIST or professional quotes, no graphic images from any professional source, no knowledge of the written or visual records, and just the reassurance of people with whom he communicated.

Counterpunch lost something in this process because, like I mentioned, an average teenager won't have a problem spotting key mistakes with the NIST findings if they know where to look. Nor should a reader of this article. It does seem odd when outlets of investigative journalism can't seem to do the same (for 15 years).

I read Counterpunch regularly. It is a unique source of news. I value the project. That does not change the fact that the magazine has misrepresented the Twin Towers collapse progression modes and government and professional literature on the collapses for at least 15 years. Alexander Cockburn presented a description from a personal correspondent (just like the etchings I suggested you try) to his readers as a true, factual description of the Twin Towers collapse progression processes without referencing official sources on the same subject even once and apparently without realizing what he was doing. That was all Counterpunch readers were offered in 20 years on the Twin Tower collapse modes. And he was a very good journalist. All major news media in the U.S. were doing pretty much the same thing. I would have hoped it would have been handled with more skepticism and reserved judgement at Counterpunch but it wasn't.

Anyone can examine the Counterpunch archive comprehensively. Looking through it one would never know each of the Twin Towers fell through a highly unique, clearly distinguishable, knowable progression modes that were directly related to the unique architecture of the towers. Anyone can see this. The readers were never informed. Authors appear unaware of this fact. The archive stands as proof that apparently few if any knew in any detail of the uniqueness of the Twin Towers collapse progression modes.

These are some facts that I believe some Counterpunch readers may want to know about the collapse modes of the Twin Towers:

- There were unique, identifiable, mappable and knowable collapse progression modes by which the Twin Towers fell. The unique mode of collapse were directly related to the unique structural design of the towers. This is indisputable. The public was never informed what that unique collapse mode was. This is also indisputable.
- The collapse modes of the Twin Towers were never mentioned in any article in Counterpunch Magazine in 20 years. There is no evidence any contributor knew about them. Readers were never informed they exist.
- Almost nobody you know can etch out even a crayon drawing concerning specific collapse modes of the Twin Towers in any detail, including in Counterpunch.
- There is no description of the Twin Towers collapse progression modes in the NIST reports. In the **NIST Final Report on the Collapse of the World Trade Center Towers** (2005) the collapse modes of the Twin Towers are mentioned only 5 times using a total of 5 words:



*collapse, ensued, began, then, global.* The only phrases used were “global collapse began”, “global collapse ensued” and “collapse then ensued”.

- The unique and highly distinct collapse modes of the Twin Towers play such a large role in the collapses of each of the Twin Towers that it is impossible for someone witnessing the collapses to understand what they are looking at without knowing what the collapse modes were.
- The Twin Towers collapse modes are misrepresented in American Society of Civil Engineers (ASCE) professional/academic publications literally as blocks consisting of a ‘crush down phase’ followed by a ‘crush up phase’ where the ‘upper block’ survives while crushing the ‘lower block’ and is then destroyed from the ‘bottom up’ since 2007.
- The Twin Towers are treated in both the NIST reports and all professional journals as generic collapses with no unique, specific features which we mortals can identify. Just falling dust blobs, as ‘catastrophic energy releases’ with absolutely no distinct, identifiable features unique to the original structural design of the Twin Towers. Or in engineering journals as ‘blocks’. Counterpunch Magazine has treated the collapse modes of the Twin Towers similarly.
- Pretty much every comment on the collapse progression processes of the Twin Towers you will see and hear during the 20th anniversary on mass media and alternative media is based on fabricated ‘cartoon-type’ models and absurdly generic descriptions. Not a single comment will describe a ***specific and unique*** Twin Towers collapse progression mode. There will be no criticism of the NIST reports at all. Only praise for this U.S Government agency’s handling of their investigations will appear in alternative media.
- There is a discrepancy of more than 800% in the NIST description of the WTC1 tilting process that any non-technical person that takes the time to watch a video can spot. This inconsistency has gone unchallenged and unnoticed by both corporate and alternative media for more than 15 years and counting. It won’t go away by ignoring it.
- People who are on record for 20 years not knowing much of anything about the unique, distinct, mappable and knowable way the Twin Towers collapsed are not the best candidates to teach ‘truthers’ about how the Twin Towers collapsed.
- The root cause of more advanced misrepresentations of the Twin Towers collapse modes can be traced to a decision by the NIST in 2002 to refuse to offer the public any information on the collapse modes of the Twin Towers from 2002 to 2021. Silence on the subject of Twin Towers collapse modes in their 2005 final report led directly to Dr Steven Jones misrepresenting the Twin Towers collapse modes in 2006 and Dr Bazant misrepresenting the collapse modes from 2007 to 2021. They couldn’t have succeeded without the NIST’s silence. The 2002 decision preceded all the collapse mode misrepresentations and made them all possible.
- All 3 of the most sophisticated misrepresentations of the Twin Towers collapse modes circulating among the public are by sources with PhDs in the physical sciences. They were introduced to the public in 2005, 2006 and 2007. Only one of the three claims to be a ‘truther’. One is a U.S. Government agency. Why are none of these sources challenged in alternative media? (Because you do not have the capacity to take on PhDs in the physical sciences? Because you have never studied the sources? Because you did not know these sources existed?)

- People lack the ability to trace misrepresentations of the Twin Towers collapse modes and find out where the source material is really coming from. The large, large majority of Counterpunch readers, though well educated, lack the ability to read this source material. Some of it is encoded in the form of differential equations. The logic is hidden in the equations. So is the bullshit. These are examples:

2007

Bazant:

<https://www.thestructuralengineer.info/index.php/publications/online-library?keywords=M.%20Verdure>

2008

Bazant:

<https://ascelibrary.org/doi/abs/10.1061/%28ASCE%290733-9399%282008%29134%3A10%28892%29>

Bazant:

<https://ascelibrary.org/doi/abs/10.1061/%28ASCE%290733-9399%282008%29134%3A10%28917%29>

<http://www.journalof911studies.com/wp-content/uploads/2017/01/2008MacQueenSzamboti.pdf>

2010

Bazant:

<https://ascelibrary.org/doi/abs/10.1061/%28ASCE%29EM.1943-7889.0000139>

<http://www.journalof911studies.com/wp-content/uploads/2016/10/2010-Article-Chandler.pdf>

2011

Bazant:

<https://ascelibrary.org/doi/abs/10.1061/%28ASCE%29EM.1943-7889.0000198>

2012

Bazant:

<https://ascelibrary.org/doi/abs/10.1061/%28ASCE%29EM.1943-7889.0000362>

2016

<https://www.europhysicsnews.org/articles/epn/pdf/2016/04/epn2016474p21.pdf>

2017

Bazant:

<https://www.europhysicsnews.org/articles/epn/abs/2017/01/epn2017481p18/>

[epn2017481p18.html](http://epn2017481p18.html)

Bazant:

<https://www.europhysicsnews.org/articles/epn/pdf/2017/01/epn2017481p18.pdf>

Can you spot the misrepresentations? Can you tell which parts are bullshit and which are not? Can you follow the underlying logic and spot where it goes bad? Of course not unless you can read the language. This is bullshit logic hidden in differential equations.

This academic language flies right over the heads of journalists. They can't read a thing. It looks impressive. Someone can describe the Twin Towers collapse modes literally as blocks for years in this academic language and journalists would have no clue. The readers of these journalists will have no clue either. In fact, that is exactly what is happening in these series of papers and that is exactly what happened to Counterpunch Magazine.

- A magazine and website that claims to 'debunk' 9/11 issues for their readers has no right to misrepresent both the Twin Towers collapse modes and the written history of the Twin Towers collapse modes to their readers and to the general public for at least 15 years. Since it is all recorded it isn't as if it can be changed. Have you actually read your own material on the Twin Towers collapse modes in these linked articles? Do you understand it? Are you sure?
- If Counterpunch Magazine has been unwittingly and unknowingly misrepresenting both the collapse modes of the Twin Towers and the written history of the collapse modes to their own readers for at least 15 years (and they have), imagine the irony. Imagine the scale of vulnerability.
- Hopefully some of the readers will realize that a more distant and evidence-based approach to NIST claims (which is after all a U.S. Government agency) would have been a more intelligent and consistent approach for an alternative investigative news source to take. This approach requires more work but it helps protect from a lot of dead-end logic, problems and embarrassment later. After all, isn't that precisely what 'truthers' are being accused of (and are often guilty of)?
- Note that the general public was first subject to the most advanced professional/academic misrepresentations in 2005, 2006 and 2007. Counterpunch Magazine went into a type of intellectual lockdown on this subject since 2006. The general public was subject to three different technically advanced misrepresentations from 2005 to 2021.

During this time Counterpunch Magazine played no role whatsoever in spotting these misrepresentations or informing their readers or the general public about them. They offered no new information on the subject of the Twin Towers collapse modes from 2006 to 2021 because they were so absolutely sure of the correctness of their position in 2006.

- The third of these misrepresentations of the Twin Towers collapse modes was made by a person with a PhD in mechanical engineering. He isn't a 'truther'. It was published repeatedly in ASCE publications. This is a professional misrepresentation of the Twin Towers collapse

modes existing since 2007 and was never challenged or even noticed by contributors to Counterpunch Magazine. Their readers were never informed it exists.

- Anyone who was not in agreement with the NIST (a U.S. Government agency) was implicitly and not so implicitly characterized as those who ‘believe in flying saucers’ and as ‘moon-hoaxers’ in Counterpunch Magazine from 2006 to 2021.

This Manichean mindset was shockingly anti-intellectual. It still is. There are more categories of people in this world than ‘truthers’ and those who thought like Alexander Cockburn about the Twin Towers. Thank God for that. Alternative news sources essentially ***locked out any independent research and inquiry*** into the Twin Towers collapse modes from at least 2006 to the present.

- The result? Technical illiteracy of the Twin Towers collapses. The unchecked propagation of misrepresentations of the Twin Towers collapse modes in public and in professional/academic literature and in Counterpunch Magazine.

One surprising consequence is that on the subject of the Twin Towers collapse modes there was essentially no difference between ‘mainstream’ corporate media, alternative news outlets, and independent investigative journalism in the U.S. All sources were technically illiterate themselves on the collapse modes and encouraged technical illiteracy among their readers. All sources perceived ‘the truth’ in Manichean terms of ‘truthers’ vs ‘mainstream wisdom’, in a simple black-white way. None seemed to understand and truly fact-check their own sources. When it came to the collapse modes of the Twin Towers, CounterPunch became just another brick in the wall. That is not a good sign.

This is not a comprehensive list. These are just some of the things Counterpunch readers may want to know about the Twin Towers collapse modes and the written records that one cannot find in Counterpunch Magazine or any alternative news source (and perhaps never will).

Counterpunch will most probably continue to unwittingly misrepresent both the Twin Towers collapses and written history of the collapses for a long time to come to their readers. They will probably believe they are doing it for a good cause. I’ll probably continue reading because it is a very good online magazine with many informative articles. But on this issue the magazine has obviously been very weak, uninformed, and a poor source of information for their readers. These articles will probably remain in their archives without any further comments or corrections. These contradictions won’t go away by themselves. They will probably just sit there unnoticed or ignored.

In peace,

Thomas Kost

I can be contacted at [tkost999@gmail.com](mailto:tkost999@gmail.com)